



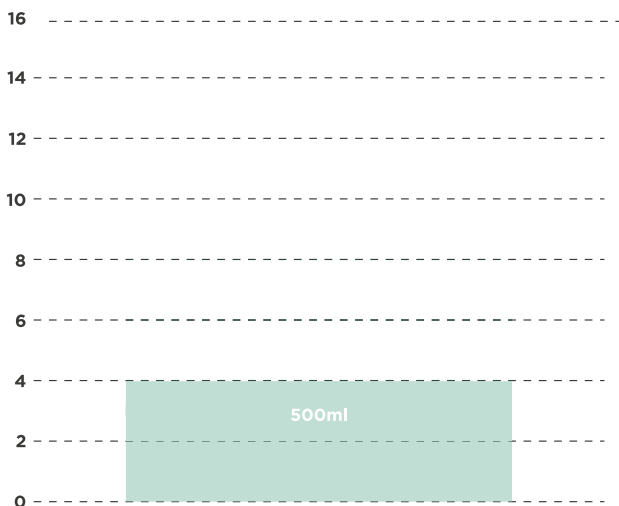
G82

UNDERFLOOR HEATING PANEL ADHESIVE

- **Dichloromethane Free**
Non-Chlorinated Formulation.
- High Tack.
- EPS & XPS Compatible.
- Superior Coverage.



TECHNICAL DATA



SQUARE METRE COVERAGE (m²)*:

	500ml
Single-sided	4m²
Double-sided	2m²

APPLICATION TYPE:

Single-sided or Double-sided

FLASH-OFF TIME:

1 min

OPEN TIME:

30 mins

COLOUR:

Green

ADHESIVE TYPE:

SBR

TYPE:



500ml

TIP:



Fixed

SPRAY TYPE:



Web

*consult the Spray Manual for a more detailed tutorial on the bonding process.
**depending on environment & ambient temperature.

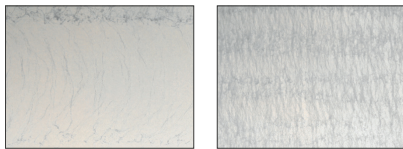
CHEMICAL TECHNICAL DATA

Viscosity	100 - 150 Cps
Total Solids	30%
Colour	Green
System Flammability	Flammable Adhesive in Flammable Propellant
Shear	855N
Peel	23N
Shear adhesion failure temp (SAFT) 100grams	82°C
Temperature Resistance	90°C
Flash-off Time	1 min depending on atmospheric conditions
Open Time	30 mins
Shelf Life	18 months from date of manufacture

HANDLING & STORAGE

- Consult Safety Data Sheet prior to use.
- DO NOT store at temperatures over 50°C.
- Avoid exposure to direct sunlight.
- For optimum performance, store at 18°C during use, but must always be above 10°C.
- DO NOT ALLOW THE PRODUCT TO FREEZE.
- DO NOT store directly on concrete floor.
- Shake well before use.
- For Full Handling and Storage details Consult Material.
- Safety Data Sheet Section 7.
- To prevent a blockage in the spray nozzle, after use turn the can upside down and press the nozzle until adhesive spray is cleared.
- Replace the cap after use to protect the valve.
- Do not use in confined spaces without adequate ventilation and/or respirator.
- For Full PPE Information Consult Safety Data Sheet Section 8.
- Always test product to determine suitability for your particular application prior to use in production.

COVERAGE



LIGHT COVERAGE

HIGH COVERAGE

DIRECTIONS FOR USE

- This product is designed to be applied to one side of the surfaces to be bonded together, However, It can be used for double sided bonding where required.
- Prior to use, check compatibility. Spray a small test patch of the adhesive on the substrate. This product may degrade some substrates.
- Before bonding ensure that surfaces are clean, dry and free from dirt, dust, oil, loose paint, wax or grease, etc.
- For best results, the temperature of the adhesive and the surfaces being bonded should be between 16°C - 27°C.
- Use this product we correct PPE and with adequate ventilation.

SHAKE WELL BEFORE USE

1. Spray approximately 4" - 6" away at a 45-60° angle to the surface, applying a uniform coat of adhesive to obtain a good coverage of the surface.
2. Adhere surfaces and press together with adequate pressure.
3. Allow 24 hours for the adhesive to fully cure.
4. Use solvent cleaners to remove any over spray.
5. After use to prevent a blockage in the spray nozzle, turn the can upside down and press the nozzle until adhesive spray is cleared.
6. Replace the cap after use to protect the valve.
7. Store according to the material safety data.

SUBSTRATES

G82	Dichloromethane Free	Synthetic Grass	Wall Cladding	Sheet Vinyl	Vinyl Tile	Cushion Vinyl (Naked Back)	Cushion Vinyl (Felt Back)	PVC Profiles	Carpet- Gel Backed	Carpet - Synthetic Backed	Fibre Bond Carpets	Carpet Tiles
	●					●	●	●	●	●	●	●

SUBFLOORS

PU Underlay	Rubber Crumb Underlay	Rubber Underlay	Rubber Floorcoverings	Linoleum (Marmoleum)	Stair Nosings	Carpet Gripper	Flooring Grade Ply	Hardboard	Chipboard	OSB Board	Concrete	Sand & Cement	Ceramic	EPS
●	●						●	●	●	●	●	●	●	●