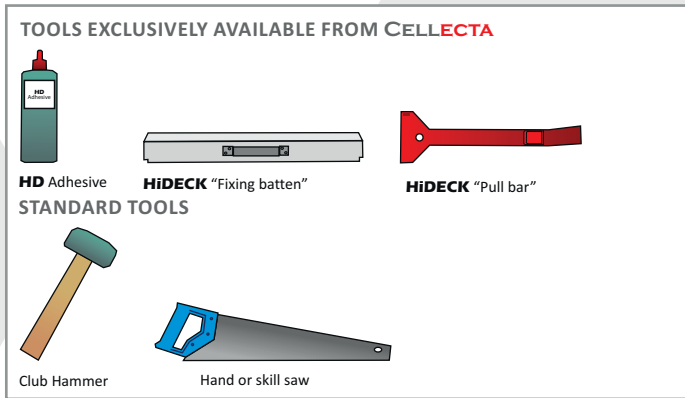
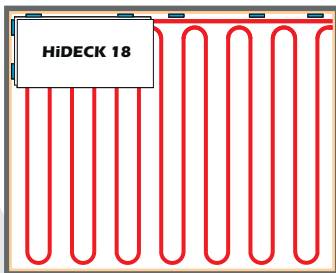
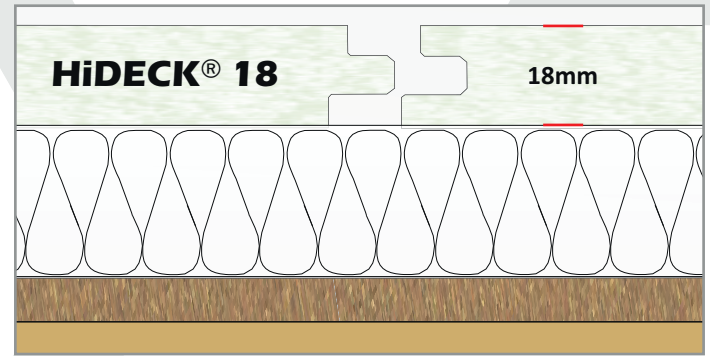


CELLECTA HiDECK® 18 Installation Details

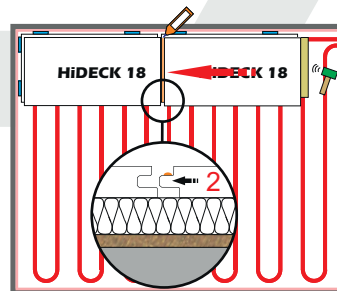
INSTALLATION TOOLS REQUIRED



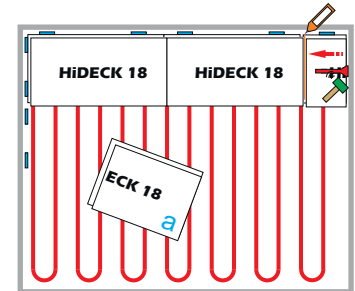
HiDECK 18 UFH SEPARATING FLOOR PROFILE



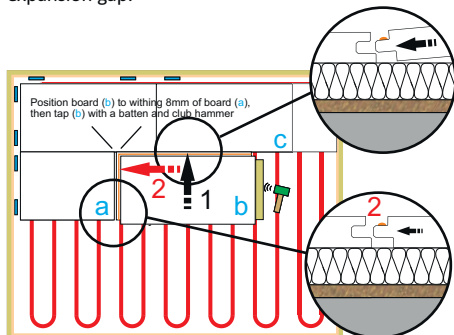
- (1) Clear sub-floor of any building debris.
- (2) Install the insulation board and UFH pipes in accordance with the manufacturers specification.
- (3) Starting in the far left hand corner, place packing shims along the two right angle walls.
- (4) Install the first HiDECK 18 (with its tongues facing the walls), using packing shims to produce a 6-10mm expansion gap.



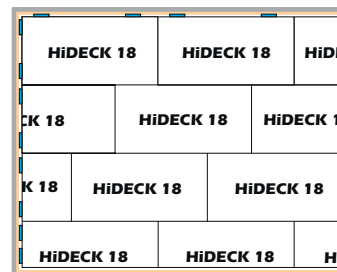
- (4) Apply a strip of HD Adhesive along the next boards short edge tongue.
- (5) Push the next HiDECK 18 into the first one, ensuring the edge line up exactly.
- (6) Using a HiDECK "fixing batten" and club hammer carefully tap the board until the boards are fully engaged and no gap can be seen.



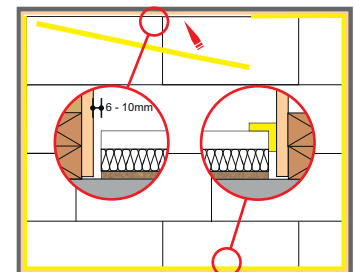
- (8) At wall abutments, cut the HiDECK 18 "a" to suit (allowing for a 5-10mm expansion gap).
- (7) Apply a strip of HD Adhesive along the board's short edge tongue and push the boards together by levering them with the "Pull bar" or tapping the "Pull bar" with a club hammer.



- (8) Start the next row with the cut off section from the previous row (a). Apply a strip of HD Adhesive along the boards long edge tongue and push the HiDECK 18 board into the previous row (c), leaving a 6-10mm expansion gap where it meets the wall.
- (9) Position the next board within 8mm of board "a". Apply a strip of HD Adhesive along next board's long and short edge tongues and 1 push into the previous row "c".
- (10) Then 2 using a "fixing batten" and club hammer carefully tap board "b" into "a" until the boards fully engaged and no gap can be seen.



- (11) Continue as before.
- (12) Cover the whole floor with HiDECK 18 boards, ensuring a 6-10mm expansion gap is maintained around the floor's perimeter.



- (13) Remove the packing shims and push the YELOfon ES strip into the expansion gap around the floor's perimeter.
- (14) Sit the wall treatment on the strip and trim of any excess strip.
- (15) Seal any gaps with a suitable flexible mastic.
- (16) Any excess HD Adhesive should be allowed to cure (24 hours) and then removed with a scraper and sandpaper.

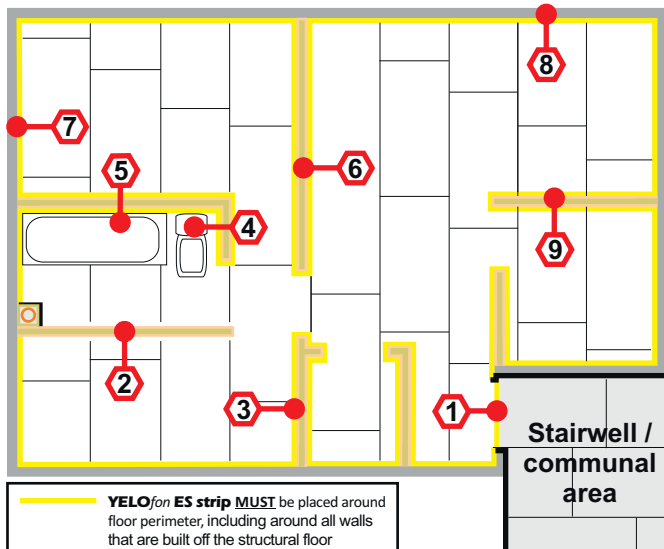
IMPORTANT INSTALLATION ADVICE



To address possible flanking transmission - HiDECK boards must not make direct contact with the wall and its treatments. Place YELOfon ES Strip around the floor perimeter to prevent possible acoustic flanking. Areas marked with signify installed YELOfon ES Strip.

CELLECTA HiDECK® 18 Design Details

To create a thermal break and ensure the acoustic performance of the floor structure is not compromised, the **HiDECK®**s must be completely isolated from the structural floor, soil pipes, door frames, surrounding walls and skirting.



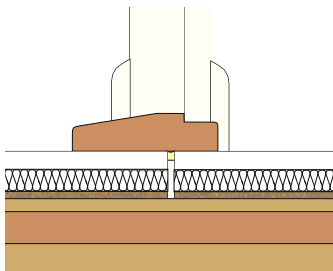
TECHNICAL ADVICE & SUPPORT

CELLECTA manufacture a range of high performance thermal and acoustic insulation products, supported by a technical advice line staffed by experienced consultants who can provide a number of useful services:

- 🔧 Technical and installation advice
- 🔧 Give advice on the most suitable product to use
- 🔧 Supply detailed fixing instructions
- 🔧 Arrange site surveys
- 🔧 Design specifications

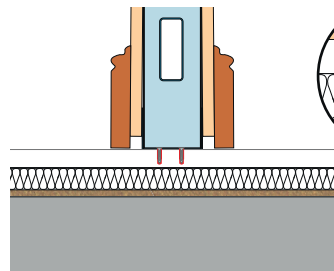
Technical & Installation Advice
 08456 71-71-74 www.cellecta.co.uk

1 Door threshold



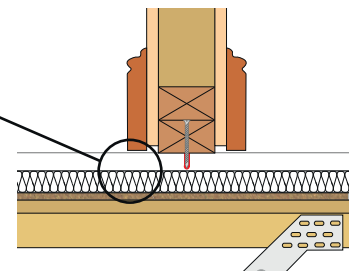
Leave a 5-10mm acoustic break between the habitable area and the communal area

2 Metal frame partition built off the floor treatment

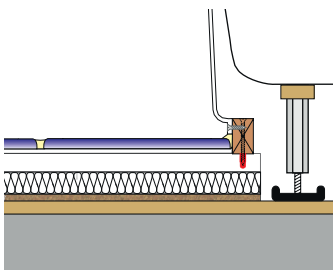


Non-load bearing metal frame or timber stud walls can be built directly off the **HiDECK 18** boards. Care should be taken to ensure screws DO NOT penetrate the resilient layer.

3 Timber stud partition built off the floor treatment

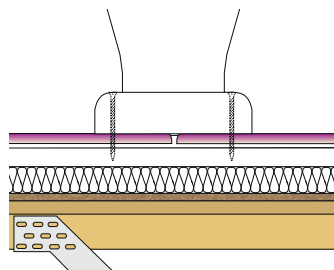


4 Baths, shower trays and sanitary ware built off floor treatment.



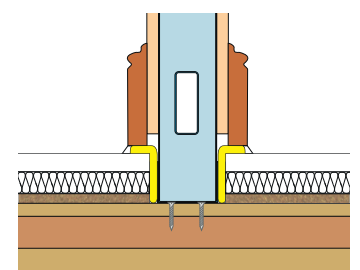
Baths, shower trays and sanitary ware can be built directly off the **HiDECK 18** boards. Under no circumstance should screws penetrate the resilient layer.

5 Baths, shower trays and sanitary ware built off the structural floor



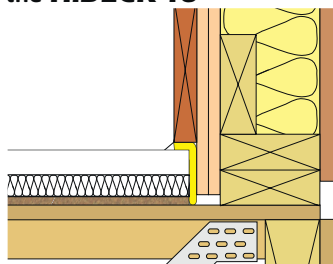
Baths, shower trays and sanitary ware built off the structural floor should be isolated from the **HiDECK 18** boards and any floor finished.

6 Metal frame partition built off the structural floor



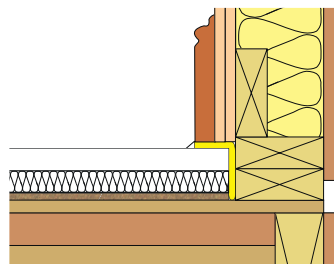
Lightweight partition walls built off the structural floor **MUST** be isolated from the **HiDECK 18** boards with

7 Wall treatment installed before the HiDECK 18



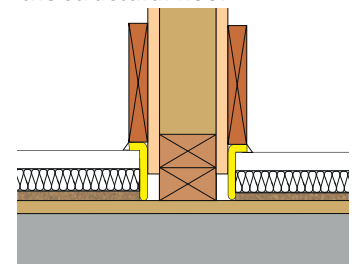
Leave a 5-10mm gap between the **HiDECK 18** and the wall. Install **YELOfon ES Strip** in the gap to ensure the acoustic isolation of the **HiDECK 18** from the wall.

8 Wall treatment installed after the HiDECK 18



Leave a 5-10mm gap between the **HiDECK 18** and the wall. Install **YELOfon ES Strip** in the gap to ensure the acoustic isolation of the **HiDECK 18** from the wall.

9 Timber stud partition built off the structural floor



The acoustic isolation procedure in details **8 & 9** should be adopted for Lightweight Internal walls built off the structural floor.