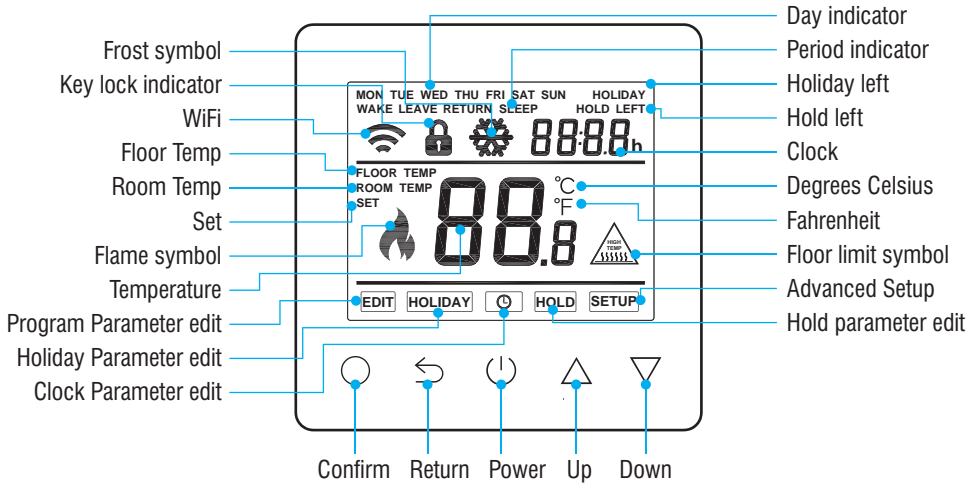


DISPLAY SYMBOLS



'ProTouch WiFi' app available from



Support: ☎ 01268 567019

www.prowarm.com

THERMOSTAT DESCRIPTION

The new ProTouch WiFi is a smart thermostat used to control your water heating system. It will keep your home at comfortable temperature whilst minimizing energy use. Install the app on your smart phone to control your heating system remotely with the WiFi thermostat.



MAIN FUNCTIONS

- ✓ Power consumption monitor (in APP)
- ✓ Holiday function
- ✓ Time display
- ✓ Hold function
- ✓ Key-lock
- ✓ Open window detection
- ✓ Off time frost protection
- ✓ Floor temperature limitation
- ✓ Optimum start

THERMOSTAT DESCRIPTION

TECHNICAL SPECIFICATION

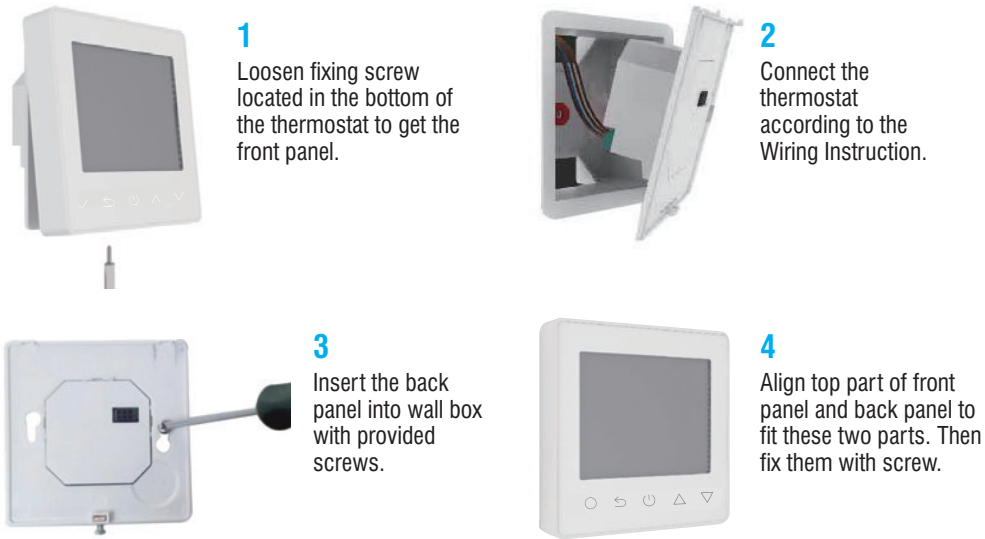
Supply voltage: 50/60Hz 220-240V AC
 Max load: 3A
 Standby power: < 2W IP rating: IP21
 Max wire diameter: ≤2.5mm²



PROTOUCH Smart Thermostat

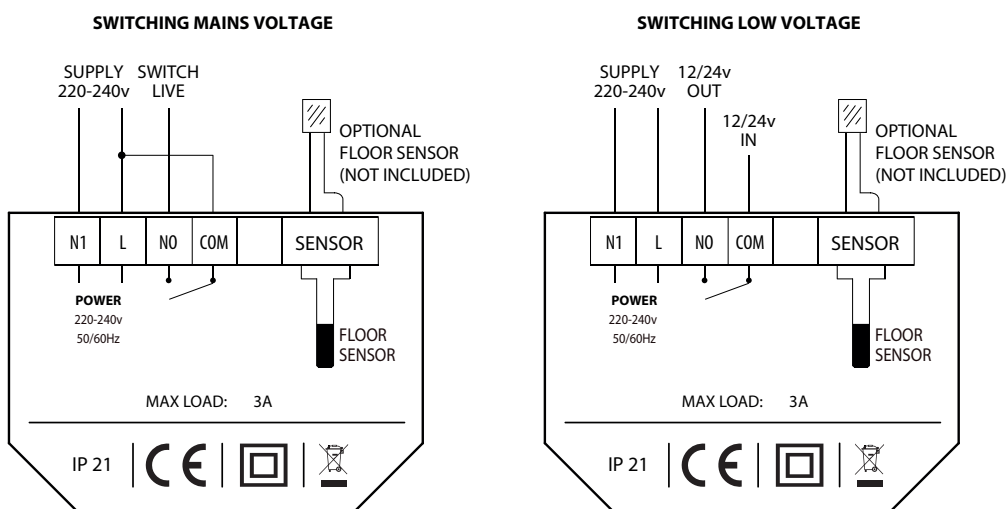
INSTRUCTION MANUAL & USER GUIDE

INSTALLATION AND WIRING INSTRUCTIONS



NOTE: Thermostat should be mounted in a 35mm deep single gang back box

WIRING INSTRUCTIONS

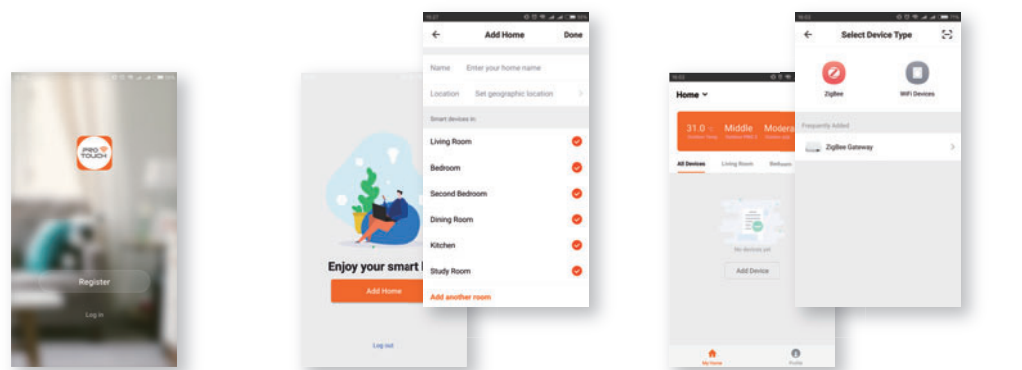


Ensure power is disconnected when wiring!

WIFI CONNECTION

Step 1

Scan the QR code through mobile browser or download the App from APP Store or Google Play



Step 2

Log in or sign up the APP through Phone No. or your Email address

Step 3

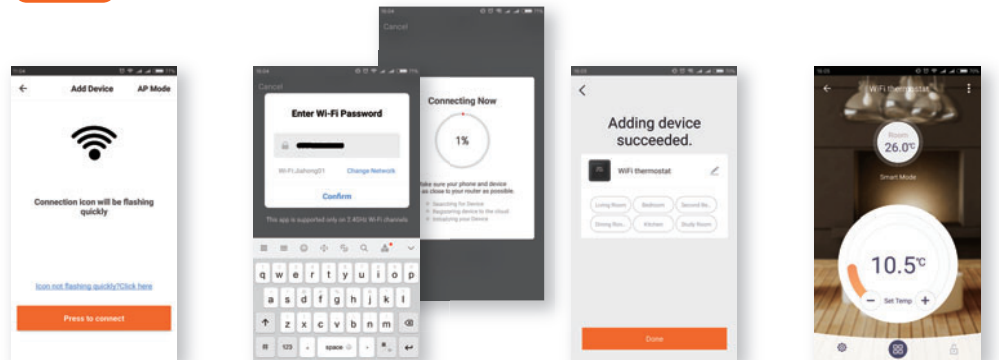
Click "Add Home", fill in the information about the Home

Step 4

Click "+" on the top-right corner of the screen. Then click "WiFi Devices" on the top-right corner of the screen



'ProTouch WiFi' app available from....



Step 5

Set the thermostat based on APP's instruction. Then click the bottom button

Step 6

Log in WiFi password and click the button to continue.

Step 7

When connection is done, Click "Done" or make a new name for your thermostat

Step 8

You can check the actual temp, change the set temp and other operations on the control interface.

